

Product Summary

The VP92+ is our 4K/1080 industrial grade network digital signage media player with the capability to play content from USB, SD, SFTP, LAN, YouTube, IPTV, URL and WEB. The VP92+ also has a subscription based cloud service called StudioPro/StudioWeb, making the software equally easily accessible from a web browser using web-based technology to connect the player through the cloud.

The VP92+ auto powers on, auto plays and auto seamless loops audio, video and image files or a mix of files. The VP92+ easily converts to an interactive digital signage solution coupled with any of our LED push buttons, IR touchless buttons, motion sensors, proximity sensors weight sensors or with RFID to uniquely trigger content with any of the below, plus RFID, LIFT, SCAN, RF PUSH, TAP and Touchless Buttons.



Push

Move

Wave

Elevate

Sense

Features & Benefits

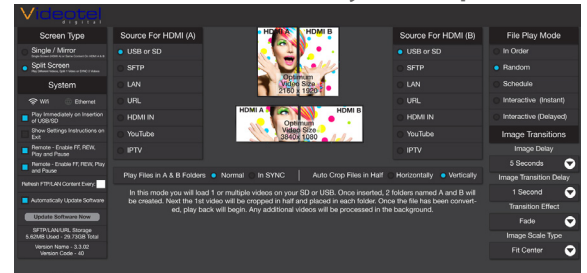
- Designed with industrial grade parts & components
- Dual HDMI ports allows for up to two screens per player
- Full 1080/H.265 4K superior video quality
- Network Ethernet and 2.4GHz / 5GHz Wifi to update content remotely
- 64GB of on board storage
- Estimated lifetime: 6-12 years running consistently 24/7
- Seamlessly plays, & loops audio, video, image or mixed files
- Interactive Capabilities– trigger content files with LED buttons, motion sensors, weight sensors, bar codes, proximity, and RFID tags
- Heavy duty full metal enclosure designed for rugged use
- On board audio extractor for alternate audio output
- RS232/TTL capable
- Video rotation options: 90°, 180°, 270° and 360°
- Temporary set screws allow access to 4 countersunk wall/counter mount holes

Specifications

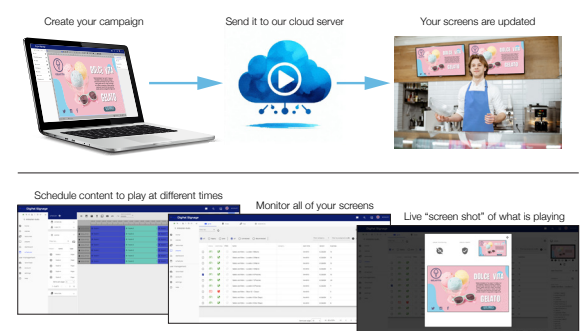
- Supports up to 3840 x 2160 resolution at 60fps
- Video Codecs: MP4, M4A, FMP4, WebM, Matroska, MP3, Ogg, WAV, MPEG-TS, MPEG-PS, FLV, ADTS (AAC), FLAC, AMR, JPEG motion photo
- Display Resolutions: The VP92 offers most resolution up to 4096x2160, including 3840x2160, 1920x1080, 1600x900, 1280x1024, 1440x900, 1366x768, 1280x800, 1152x864, 1280x720, 1024x768, 832x624, 800x600, 720x576, 720x480, 640x480, 720x400.
- HDMI Version: 2.0
- CPU: Quad-core ARM Cortex-A55 processor
- GPU: ARM G52-2EE
- Video Decoder: 4K H.265/H.264/VP9
- Audio Formats: .mp2, .mp3, .wma, .ogg, .flac, .wav, .aac
- Image Formats: .jpeg, .bmp, .gif, .png (Images up to 8176x8176)
- Frame Rate Capability (fps): 23.98, 24, 25, 29.97, 30s, 50, 59.94, 60
- Audio Output: HDMI and Stereo L/R (line level)
- USB: Dual 3.0 (Can Be Used For Content Playback, Keyboard, Mouse, Scanner)
- Compatible SD/USB format: FAT, FAT32 and ExFAT



Embedded Content Playback Options



StudioWeb/StudioPro Cloud Service



- I/O Port: TTL and RS232 Capable (with adapter)
- Size: 7"/180mm(W)x5.25"/133mm(D)x1.12"/28mm(H)
- Weight: Player 1.4Lbs/Player & all Parts 3.2Lbs
- Power Supply: 100-240VAC input/5.5VDC (2.1A)
- Warranty: 2 Years

In The Box

- VP92+ 4K/1080 Digital Signage Media Player
- 2.4GHz / 5GHz Wifi Antenna
- Multi Function Remote Control
- 5VDC External Regulated USB Power Supply
- 5 Foot High Quality Shielded HDMI Cable
- 5 Foot 3.5mm To Male RCA Audio & Video Cable
- 4 Two Inch Screws (For Wall Mounting)